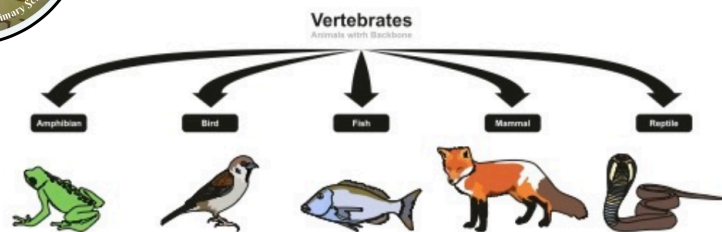


Year 4 - Living Things and their Habitats - Half Term 6

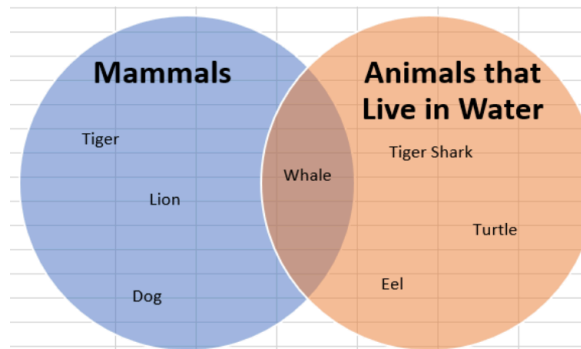
What is a Classification Key?



A classification key is a series of questions that determine an organism's physical characteristics. When you answer one question, it either branches off to another question or identifies the organism. Ultimately, they help to identify an unknown organism, or work out how to categorise groups of similar organisms.

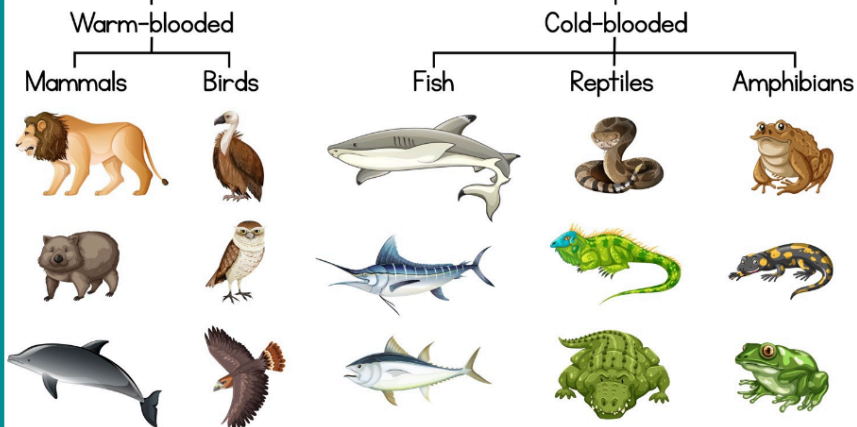
Venn Diagrams

Animals can be sorted, or classified, in a number of different ways. A 'branched' diagram or a venn diagram, like those shown below, are just two examples.

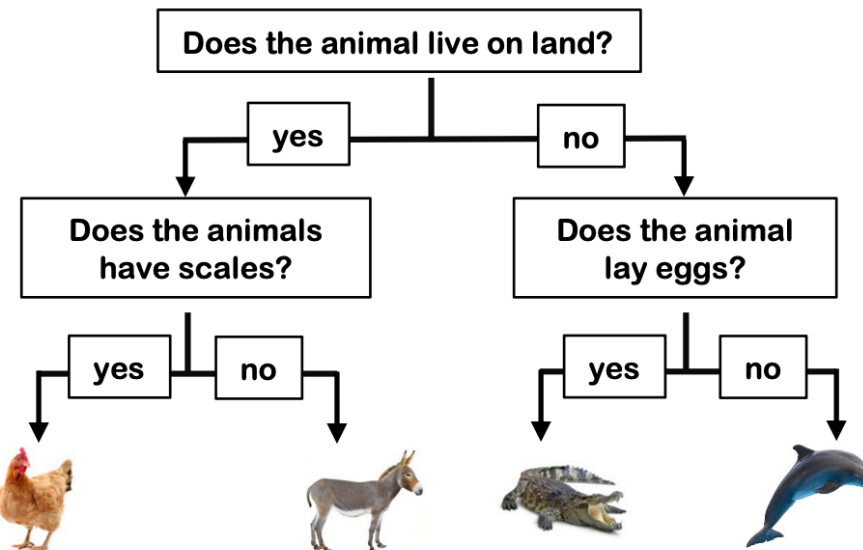


Classification

Classification of Vertebrates



Classification Keys



Key Vocabulary

adapted	changed to suit an environment
camouflage	a way of blending or hiding in your surroundings
coastal	at or near the coast, or beach
grassland	areas containing grass
classify	to arrange things in classes or groups according to shared qualities or characteristics
species	a grouping, or kinds of animals with similar characteristics
sub-group	a group within a larger group
classification key	a series of questions that help to identify a species
region	a large space or area
blubber	a layer of fat beneath the skin of sea mammals
ecosystem	a community of living things
oxygenised	contains oxygen

To know statements



I know about different habitats.

I know how animals can be classified.

I know how to create a classification key.

I know about adaptations and classification within species.

I know how to classify pond plants.

What can you remember from previous units?

Can you name the different families of animals?

Can you remind how plants adapt to their environment?

What is a microhabitat?

Anything else you have learnt? What have you enjoyed?

